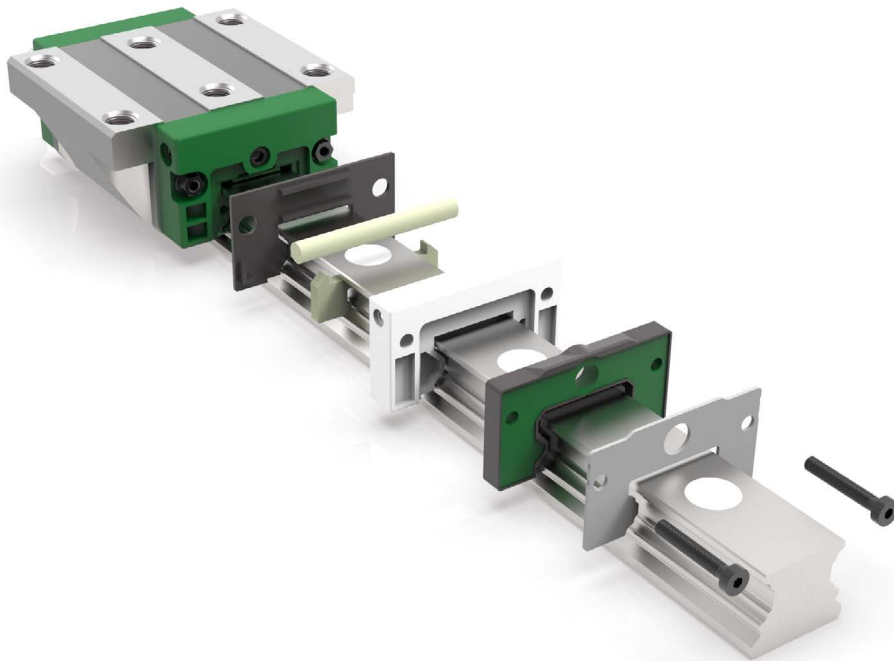


We pioneer motion

## Linear System for the Food Industry

Four-row linear recirculating ball bearing and guideway assembly  
with long-term lubrication unit KIT450

# Optimum lubrication need not be complicated, but must hit the right spot



## Special requirements in the food industry

Linear systems used in food and beverage production can only perform to their maximum potential if they are adapted to the requirements of the respective application. A key prerequisite in achieving this is a sophisticated sealing and lubrication concept, which ensures that raceways, rolling elements and seal lips are optimally lubricated with the appropriate lubricant in the right places, in the right quantity and at the right time.

## Lubricant requirement versus lubricant consumption

If you are already using monorail guidance systems from our KUBE-B series, then you have already taken the first step towards achieving an efficient lubrication solution. All KUBE-B carriages are equipped with an integral lubricant reservoir, which is located close to the raceway. The lubricant delivered to the raceways is fed directly to the rolling contact zone courtesy of a valve system integrated into the design. This ensures that all raceways and rolling elements are uniformly supplied with the optimum amount of lubricant, regardless of their position, which, in turn, leads to a reduced lubricant requirement on the part of the linear system.

### How you will benefit:

Four-row linear recirculating ball bearing and guideways KUBE-B from Schaeffler enable longer maintenance intervals and reduced lubricant consumption.

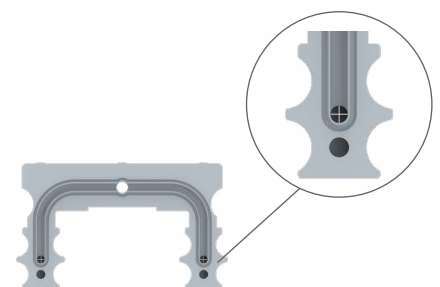


Figure: Section through the KUBE-B with lubricant feed



# Our KIT450 for the food industry

## An unbeatable partnership:

### Linear recirculating ball bearing and guideway assembly KUBE-B with long-term lubrication unit

Why not go one step further and opt for our tribologically optimised solution package devised for food and beverage production, which offers lifetime lubrication across many applications.

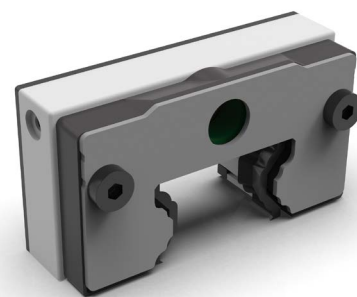
Our KIT450 is available for the KUBE-B series of four-row linear recirculating ball bearing and guideway assemblies in sizes 20, 25, 30, 35 and 45 and consists of three components:

## Long-term lubrication unit – KIT450

The KIT450 is screw mounted between the end piece and the wiper of the carriage. The long-term lubrication units store additional lubricant, which they continuously release to the raceways via a transfer medium, ensuring that all rolling elements are reliably supplied with lubricant, even over periods of

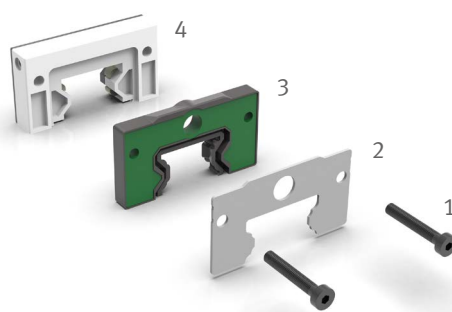
many years. Distances of over 50,000 km are possible without relubrication.

As with all our components that are specifically optimised or approved for use in the food and beverage industry, the plastic block is coloured white.



## Optimised seal assembly

A special seal assembly comprising an additional wiper complete with double lip and a non-contact sheet steel wiper is used to ensure that neither contaminants nor liquids can penetrate the carriages and that minimal lubricant egress occurs.



- 1 Fixing screw K1
- 2 Sheet steel wiper, non-contact
- 3 Additional wiper, double lip (PU), with pressure plate
- 4 Long-term lubrication unit

## Our lubricant

The lubricant is highly resistant to ageing, provides excellent protection against corrosion and offers good resistance to water and cleaning chemicals. Naturally, the lubricant is also approved for bearing positions with NSF-H1 requirements and certified for use in kosher and halal food processing environments.



## Further information

Additional material and literature is also available from Schaeffler for the food, beverage and packaging industries:

### Schaeffler medias

**The digital knowledge database and advisory platform medias can provide you with everything you need to know about Schaeffler Industrial products and solutions, all from a single, convenient source.**

▷ Further information can be found here: **“Food and packaging”**

### Linear configurator

Are you looking to configure guideways and carriages individually? Or perhaps a complete monorail guidance system? Are you looking for a proven solution that is readily configurable? Or do you require extensive design freedom? Whatever your requirement, our new linear configurators will help you to find the right solution.

▷ Further information can be found here: **“Linear configurator”**

### The following publications are available to you in our media library:

▷ Brochure

**Schaeffler solutions for the food, beverage and packaging industry**

▷ Brochure **Monorail guidance systems**

**Schaeffler Technologies AG & Co. KG**

Georg-Schäfer-Straße 30  
97421 Schweinfurt  
Germany  
[www.schaeffler.com](http://www.schaeffler.com)

Every care has been taken to ensure the correctness of the information contained in this publication but no liability can be accepted for any errors or omissions. We reserve the right to make technical changes.

© Schaeffler Technologies AG & Co. KG  
Issued: 2024, May  
This publication or parts thereof may not be reproduced without our permission.